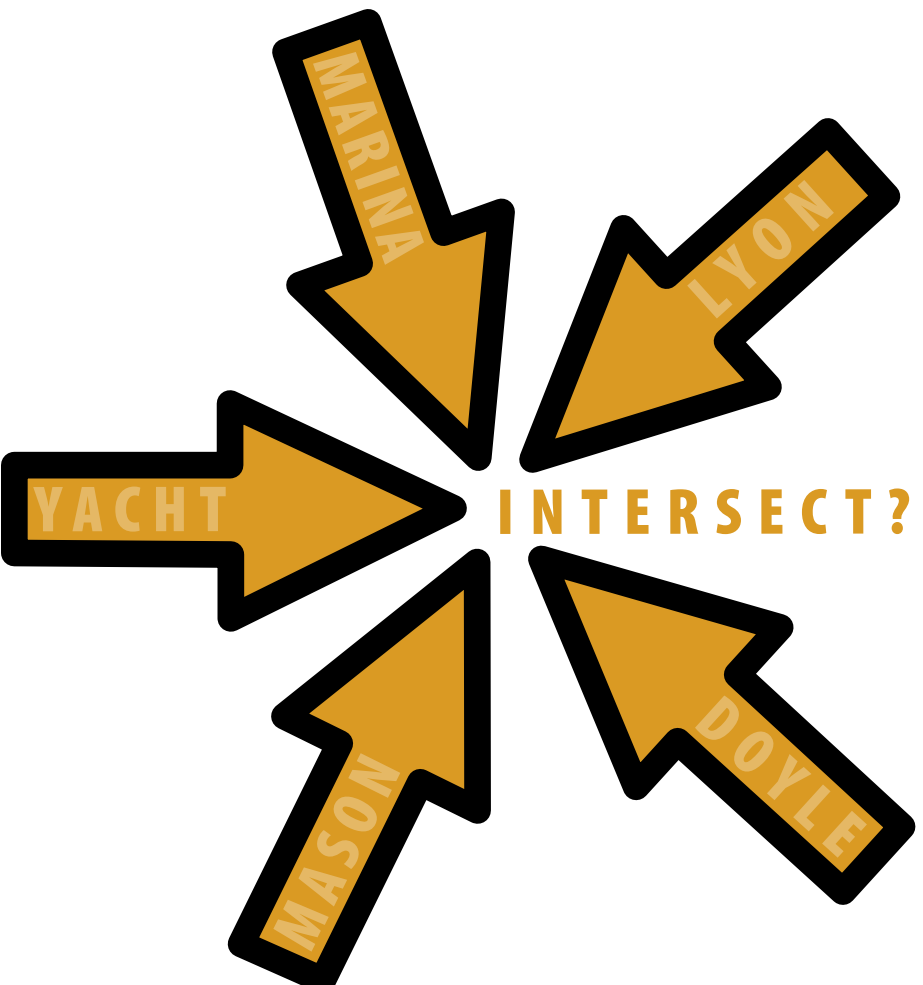


APPENDIX A - Noticing Materials

- Invitations and Worksheets
- Notification Area Map
- List of Agencies and Organizations Contacted
- Doyle Drive Website Announcement
- San Francisco Bicycle Coalition Email Bulletin Announcement
- Reminder Postcard
- Presidio Community Newsletter Article

WHERE DO
OUR IDEAS...



Help us design improvements for the five corners intersection.



Five Corners

DESIGN CHARRETTE

For the Intersection of

Marina Boulevard, Mason Street,

Lyon Street, Doyle Drive and Yacht Road

Help us design improvements for
the five corners intersection.

2004 Meeting dates:

Session 1 : Wednesday, July 28, 6-9pm

Session 2: Wednesday, August 25, 6:30-8:30pm

Session 3: Wednesday, September 29, 6:30-8:30pm

Location: Golden Gate Club, 135 Fisher Loop,
In the Presidio



San Francisco County
Transportation Authority

100 Van Ness Avenue

25th Floor

San Francisco, CA 94102

TEL (415) 522-4800



5ive Corners

DESIGN CHARRETTE

For the Intersection of

Marina Boulevard, Mason Street,
Lyon Street, Doyle Drive and Yacht Road

What is a Design Charrette?

A design charrette is typically a collaborative design effort of a multi-disciplinary team. In this case, the San Francisco County Transportation Authority (the Authority) is inviting you to participate in a series of facilitated workshops to work together to define the problem and identify design recommendations for this intersection. The sessions will incorporate agency input, large and small group discussions at the meetings, designer presentations and opportunities for you to provide input/feedback.

Why this Design Charrette?

The Authority recognizes the community's desire to discuss the operation of this intersection and is committed to supporting the process.

What will happen with the results?

Based on input from the charrette participants, the designers will submit design options to the San Francisco Department of Parking and Traffic (DPT) for their review, consideration and implementation as appropriate.

What can I do to participate?

1. Please RSVP by Wednesday, July 21 to Stefanie Pruegel at 415-227-1100 ext. 27 or s.pruegel@pamsf.com.
2. Plan on attending all three sessions if possible.
3. Please review the enclosed sheets, fill out and bring to the first design charrette session on July 28.

Please take a moment to review and fill out the enclosed sheets. If additional blank sheets are needed, please visit: www.doyledrive.org.

WORKSHOP SCHEDULE

Design Workshop Session 1

Wednesday, July 28, 6-9pm

Location: Golden Gate Club, Ventana Room, 135 Fisher Loop, Presidio

- workshop process
- agency input
- define problem
- outline design objectives

Design Workshop Session 2

Wednesday, August 25, 6:30-8:30pm

Location: Golden Gate Club, Ventana Room, 135 Fisher Loop, Presidio

- review input from Session 1
- view preliminary designs
- provide feedback for refinement

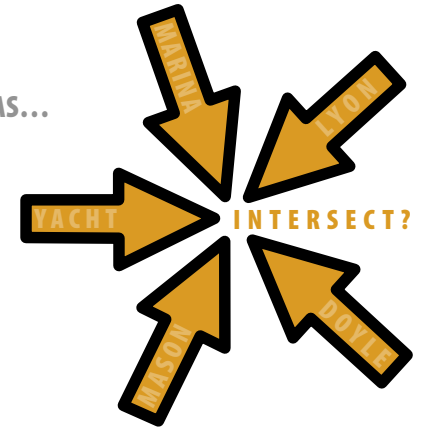
Design Workshop Session 3

Wednesday, September 29, 6:30-8:30pm

Location: Golden Gate Club, Hawthorne Room, 135 Fisher Loop, Presidio

- review refined designs
- provide feedback
- discuss next steps

WHERE DO OUR IDEAS...



Special Needs

Individuals who require documents in alternative formats or languages are requested to contact the San Francisco County Transportation Authority at (415) 522-4800.

Telecommunications for the Deaf (TDD) users may contact the California Relay Service at (800) 735-2929 or Voice Line at (800) 735-2922.

The meeting facilities are wheelchair accessible.

Driving Directions

Parking is available at the meeting location.

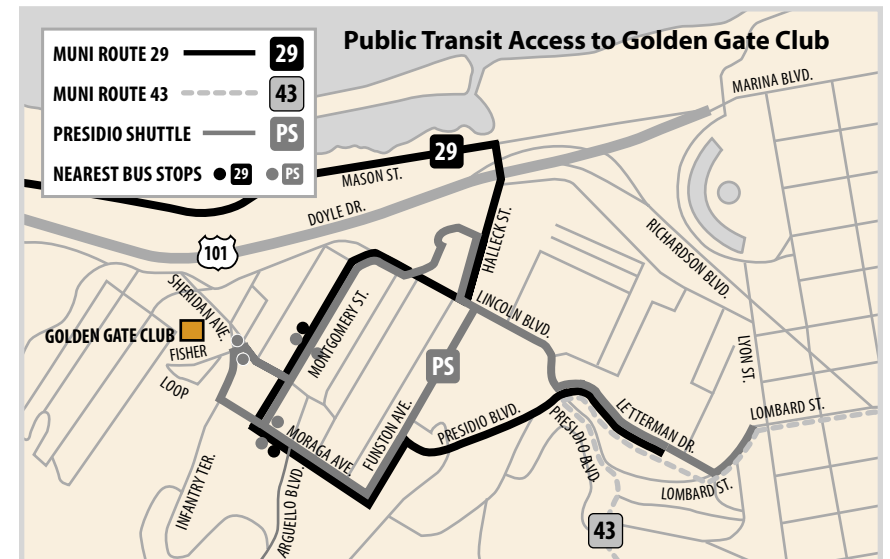
From the Lombard Gate: Enter the Presidio at Lombard and Lyon. Turn right onto Presidio Boulevard which turns into Lincoln Boulevard. Turn left onto Montgomery Street. Turn right onto Sheridan Avenue. Turn left onto Fisher Loop and continue up the hill. The Golden Gate Club is on the right.

Public Transit

The Presidio is accessible by MUNI routes 29, 41, 43 and 45. The Golden Gate Club is accessible by MUNI route 29 (closest stops: Moraga or Montgomery Street) and the Presidio Shuttle (closest stop: Fisher Loop).

For the complete Presidio Shuttle route and schedule, please visit www.presidio.gov/Visiting/DirectionsShuttle/PresidiGo.

For MUNI routes and schedules, please visit www.sfmuni.com.





5ive Corners

DESIGN CHARRETTE
For the Intersection of
Marina Boulevard, Mason Street,
Lyon Street, Doyle Drive and Yacht Road

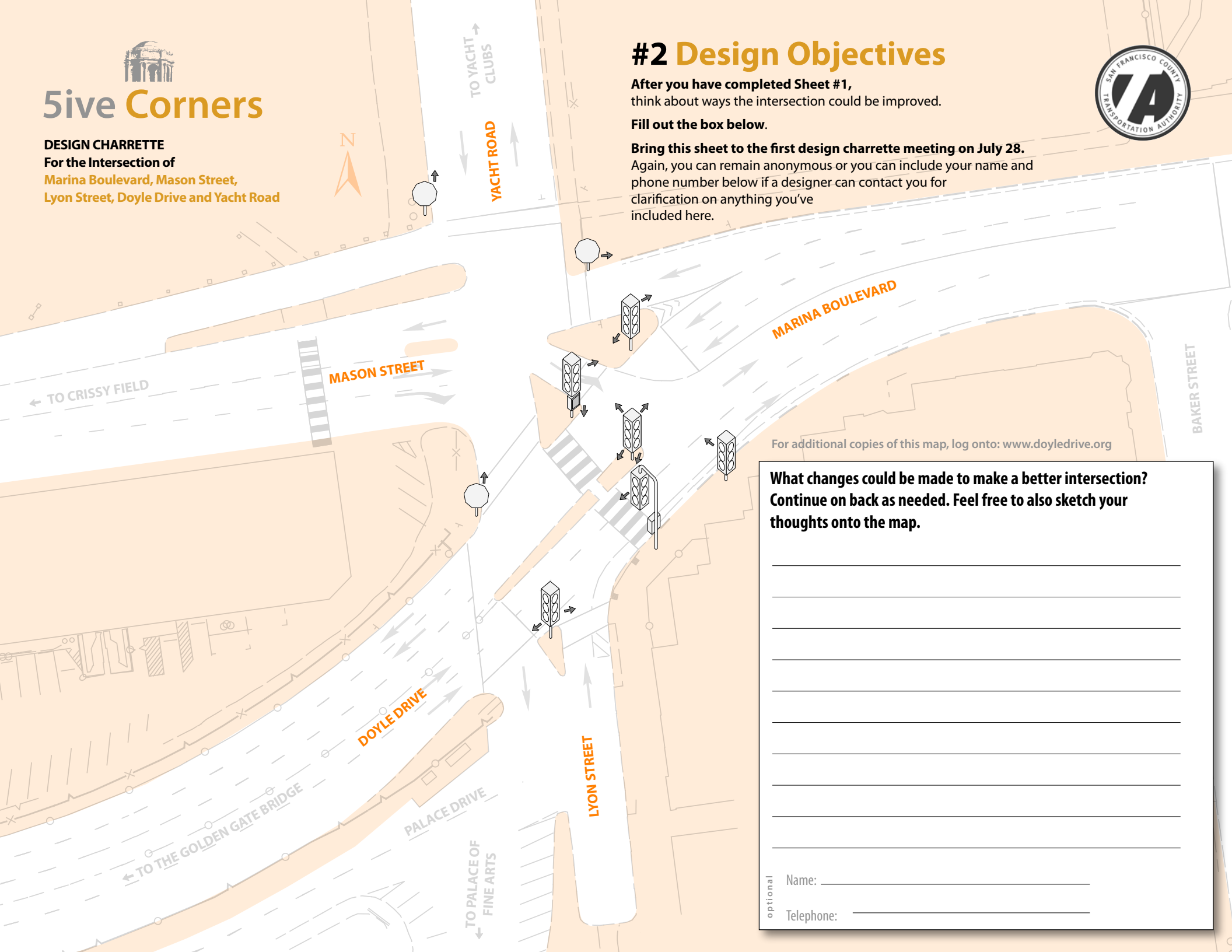


#2 Design Objectives

After you have completed Sheet #1,
think about ways the intersection could be improved.

Fill out the box below.

Bring this sheet to the first design charrette meeting on July 28.
Again, you can remain anonymous or you can include your name and
phone number below if a designer can contact you for
clarification on anything you've
included here.

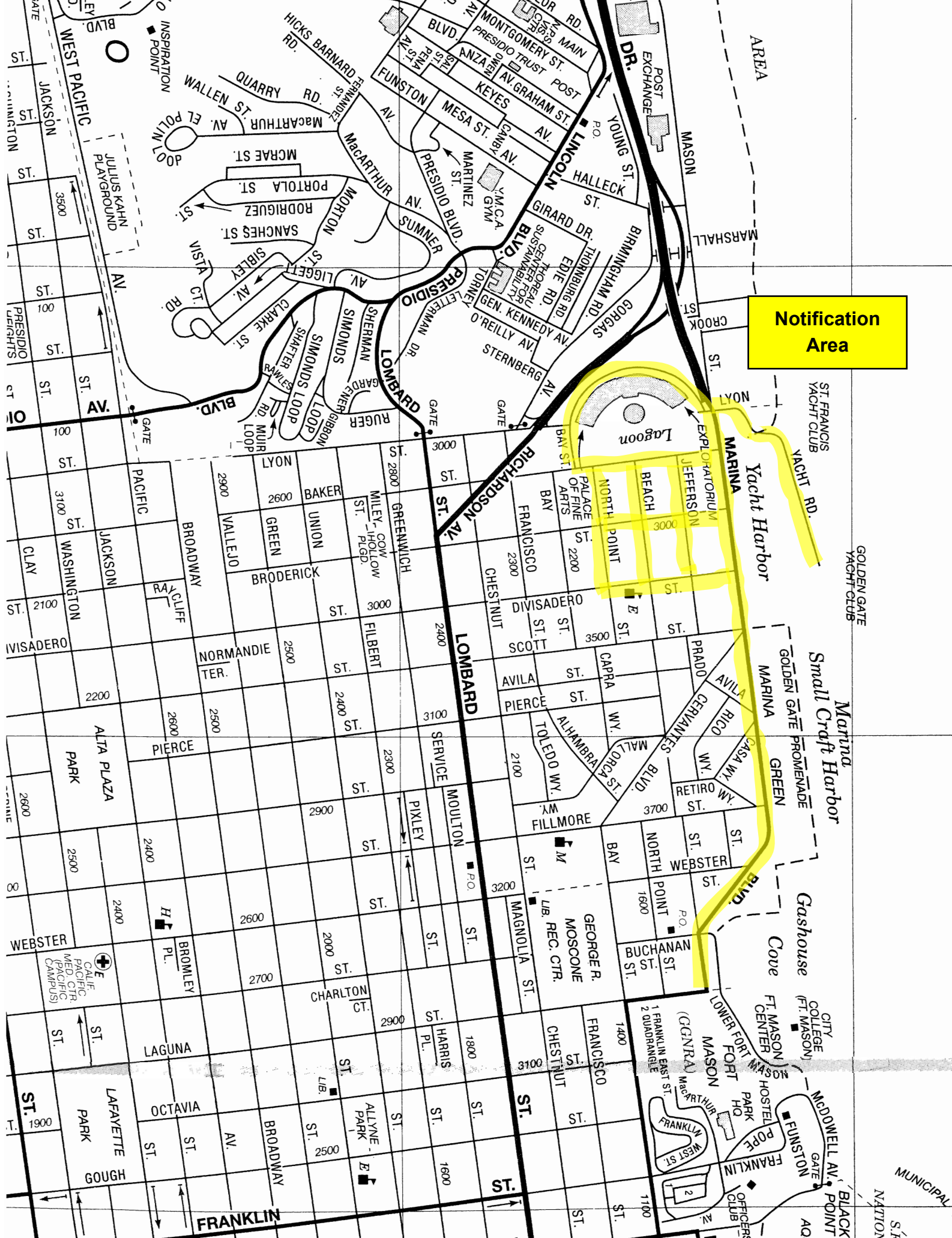


For additional copies of this map, log onto: www.doyledrive.org

**What changes could be made to make a better intersection?
Continue on back as needed. Feel free to also sketch your
thoughts onto the map.**

optional Name: _____

optional Telephone: _____



Notification Area

Notification Area

ST. FRANCIS YACHT CLUB

GOLDEN GATE YACHT CLUB

Small Craft Harbor

Marina

Gashouse Cove

FT. MASON CENTER

BLACK POINT

MUNICIPAL

S.F. NATION

Notification Area

ST. FRANCIS YACHT CLUB

GOLDEN GATE YACHT CLUB

Small Craft Harbor

Marina

Gashouse Cove

FT. MASON CENTER

BLACK POINT

MUNICIPAL

S.F. NATION

LIST OF AGENCIES AND ORGANIZATIONS CONTACTED

Local, State and Federal Agencies, Elected Officials

- The Presidio Trust
- Golden Gate National Recreation Area/National Park Service
- Federal Highway Administration
- U.S. Department of Transportation - Region 9
- US Department of Veterans Affairs
- CA Department of Transportation (Caltrans) - District 4
- CA Department of Conservation (DOC)
- Metropolitan Transportation Commission (MTC)
- Bay Area Air Quality Management District
- SF Fire Department
- SF Municipal Railway (MUNI)
- San Francisco County Transportation Authority
- San Francisco Bay Conservation & Development Commission (BCDC)
- Marin County Department of Public Works
- Golden Gate Bridge, Highway and Transit District (GGBHTD)
- City and County of San Francisco Dept. of Public Works (DPW)
- City and County of San Francisco Recreation and Park Department (Rec Park),
- City and County of San Francisco Department of Parking & Traffic (DPT)
- City and County of San Francisco Planning Department
- San Francisco Marina/Harbormaster
- Mayor's Office
- Supervisor Alioto-Pier's Office

LIST OF AGENCIES AND ORGANIZATIONS CONTACTED continued

Special Interest Representatives

- San Francisco Bicycle Advisory Committee
- Walk San Francisco
- San Francisco Pedestrian/Traffic Safety Advisory Council - City of San Francisco (DPH)
- Pedestrian Safety Advisory Committee, City of San Francisco (DPT)
- Lucasfilm Inc.
- Palace of Fine Arts
- Exploratorium
- Golden Gate National Parks Conservancy
- Crissy Field Center
- St. Francis Yacht Harbor
- St. Francis Yacht Club
- Golden Gate Yacht Club
- San Francisco Boardsailing Association (SFBA)
- S.F. Planning & Urban Research Associates (SPUR)
- Fort Point & Presidio Historical Association
- Golden Gate Sport and Social Club
- Sierra Club
- San Francisco Tomorrow
- Friends of the Palace of Fine Arts
- Planning Association for the Richmond
- North Point Neighborhood Association
- Marina Neighborhood Association
- Marina Merchants Association
- Marina Tenants Association
- Marina Cow Hollow Neighbors and Merchants
- Marina Civic Association
- Cow Hollow Neighbors in Action
- Cow Hollow Association
- The Presidio Community
- Presidio Residents and Tenants
- Neighborhood Associations for Presidio Planning (NAPP)
- Presidio Terrace Association
- Presidio Heights Association of Neighbors
- Park Presidio Neighbors
- Marina Civic Improvement and Property Owners Association



- Home
- What's New
- Project Information
- Project Outreach
- FAQ's & Contact Us
- Links
- SFCTA Home Page
- Advisory Committees

WELCOME TO THE SOUTH ACCESS TO THE GOLDEN GATE BRIDGE - DOYLE DRIVE ENVIRONMENTAL AND DESIGN STUDY

The *San Francisco County Transportation Authority (SFCTA)* is proposing to replace Doyle Drive, located in the *Presidio of San Francisco*, within the *Golden Gate National Recreation Area*. The Presidio has been part of the National Park system since 1994 and a National Historic Landmark since 1962. Working with the *Federal Highway Administration (FHWA)* and the *California Department of Transportation (Caltrans)*, SFCTA will prepare a joint Environmental Impact Statement/Report (EIS/EIR) pursuant to the National Environmental Policy Act and the California Environmental Quality Act for the proposed improvement of Doyle Drive.

Doyle Drive is 1.5 miles long and is the southern approach of U.S. 101 to the Golden Gate Bridge. Built in 1936, Doyle Drive links the City of San Francisco and the San Francisco Peninsula with the Golden Gate Bridge, Marin County and points north. As part of the primary north-south freeway link in coastal California, Doyle Drive carries over 144,000 weekday travelers, including 17,000 public transit passengers. From a regional perspective, Doyle Drive is critical to travel to and from the Golden Gate Bridge and the North Bay.

RELATED ACTIVITIES

Five Corners

DESIGN CHARRETTE - for the Intersection of Marina Boulevard, Mason Street, Lyon Street, Doyle Drive and Yacht Road

- July 28, 2004, 6-9 PM
- August 25, 2004, 6:30-8:30PM
- September 29, 2004, 6:30-8:30PM

[Download invitation and worksheets](#)

Much of the information available for review on this website is in Adobe Acrobat PDF Format. If you do not currently have Adobe Acrobat software, it is available for download at no cost on the Internet.

Click graphic to download Adobe Acrobat.



For additional help using Acrobat Reader and reading PDF files click [here](#).

[Back to Top](#)

Links are provided below to CitySpan, the official website of the City and County of San Francisco.



- City Departments
- Search
- Information Center
- Community Resources
- Feedback



- Home
- What's New
- Project Information
- Project Outreach
- FAQ's & Contact Us
- Links
- SFCTA Home Page
- Advisory Committees

WHAT'S NEW

RELATED ACTIVITIES

Five Corners

DESIGN CHARRETTE - for the Intersection of Marina Boulevard, Mason Street, Lyon Street, Doyle Drive and Yacht Road

[Download invitation and worksheets](#) (PDF / 1MB)

What is a Design Charrette?

A design charrette is typically a collaborative design effort of a multi-disciplinary team. In this case, the San Francisco County Transportation Authority (the Authority) is inviting you to participate in a series of facilitated workshops to work together to define the problem and identify design recommendations for this intersection. The sessions will incorporate agency input, large and small group discussions at the meetings, designer presentations and opportunities for you to provide input/feedback.

Why this Design Charrette?

The Authority recognizes the community's desire to discuss the operation of this intersection and is committed to supporting the process.

What will happen with the results?

Based on input from the charrette participants, the designers will submit design options to the San Francisco Department of Parking and Traffic (DPT) for their review, consideration and implementation as appropriate.

What can I do to participate?

1. Please RSVP by Wednesday, July 21 to Stefanie Pruegel at: 415-227-1100 ext. 27 or s.pruegel@pamsf.com
2. Plan on attending all three sessions if possible.
3. Please download and review the worksheets (PDF format, see link above), fill out and bring to the first design charrette session on July 28.

WORKSHOP SCHEDULE

Design Workshop Session 1

Wednesday, July 28, 6-9pm

Location: Golden Gate Club, Ventana Room, 135 Fisher Loop, Presidio

- workshop process
- agency input
- define problem
- outline design objectives

Design Workshop Session 2

Wednesday, August 25, 6:30-8:30pm

Location: Golden Gate Club, Ventana Room, 135 Fisher Loop, Presidio

- review input from Session 1
- view preliminary designs
- provide feedback for refinement

Design Workshop Session 3

Wednesday, September 29, 6:30-8:30pm

Location: Golden Gate Club, Hawthorne Room, 135 Fisher Loop, Presidio

- review refined designs
- provide feedback
- discuss next steps

Driving Directions

Parking is available at the meeting location.

From the Lombard Gate: Enter the Presidio at Lombard and Lyon. Turn right onto Presidio Boulevard which turns into Lincoln Boulevard. Turn left onto Montgomery Street. Turn right onto Sheridan Avenue. Turn left onto Fisher Loop and continue up the hill. The Golden Gate Club is on the right.

Public Transit

The Presidio is accessible by MUNI routes 29, 41, 43 and 45. The Golden Gate Club is accessible by MUNI route 29 (closest stops: Moraga Avenue or Montgomery Street) and the Presidio Shuttle (closest stop: Fisher Loop).

[View Presidio Shuttle route and schedule](#)

[View MUNI routes and schedules](#)

Recent Project Documents

- [February 23, 2004 Public Meeting Documents](#)

Links are provided below to CitySpan, the official website of the City and County of San Francisco.





PROMOTING THE BICYCLE FOR EVERYDAY TRANSPORTATION



ABOUT SFBC CURRENT ACTIONS MEMBERSHIP RIDES AND EVENTS BIKING RESOURCES VOLUNTEER STORE SITEMAP SEARCH

- ▼ News Room
- Media Resources
- Biker Bulletin
- Tube Times
- ▶ Support SFBC
- ▶ Strategic Plan
- ▶ Annual Reports
- ▶ Board of Directors
- ▶ SFBC Staff
- ▶ Jobs and Internships
- ▶ Web Badges
- ▶ Contact Us

Archives:

[2004](#) | [2003](#)

STAY INFORMED

Biker Bulletin August 25, 2004

Important Meeting For New Potrero Bike Lanes

Potrero Avenue, with its six travel lanes, is a good example of a street that needs a "road diet". Wide streets such as Potrero lead to speeding, aggressive driving, and the inevitable injuries and fatalities. The SFBC hopes that the Department of Parking and Traffic's (DPT) upcoming project will bring the Valencia road diet success formula to the Potrero neighborhood. Unfortunately, this project does *not* include the 6 blocks of Potrero between 17th and Division, and 25th and Cesar Chavez. We're asking SFBC members to attend a meeting this Thursday to support the timely implementation of this safety project and to advocate for extending the bike lanes north to Division and south to Cesar Chavez. In addition to lane removal and bike lane striping, the project will also install pedestrian median islands, create left-turn pockets, and add pedestrian countdown signals. The project is expected to begin in December.

The meeting takes place this Thursday, Aug. 26, from 6-8pm at San Francisco General Hospital's Carr Auditorium, Bldg. 3 at San Bruno and 22nd St. If you are unable to attend but are interested in this project, please send your comments to DPT by e-mailing livable.streets@sfgov.org or leave a voicemail at 554-2398 (also, please cc the SFBC at josh@sfbike.org).

Vote Now For SFBC Political Endorsements

SFBC members should have received an email message earlier this week (or if we don't have your email address, a postcard) inviting you to vote in the SFBC's endorsements process for the upcoming races for seven open seats on the SF Board of Supervisors. No other races are more important than these for the SFBC's top issues -- including building a complete Citywide Bike Network, increasing the number of bike trips in the city, and increasing bike parking and access to transit.

RESOURCES



RIDES & EVENTS



MEMBERSHIP



VOLUNTEER



Please take the time to view the candidates responses to the special SFBC questionnaire, and cast your votes. (The voting period lasts only until September 7th at 5pm, and is open to all whose memberships were current as of August 18th.) The easiest way to vote is to click on the links in the personalized email you received from us earlier this week. (If you don't think you received it, check your spam or bulk mail folder, just in case.) Or follow directions on our endorsements page at <http://www.sfbike.org?vote>. Thanks for doing your part in keeping a bike-friendly Board for the next four years!

Think The Offramp Intersection By The Palace Of Fine Arts Is Too Dangerous?

Come to the Five Corners Design Charette tonight, sponsored by the S. F. Transportation Authority, and help identify problems with the intersection of Marina, Mason, Lyon, Doyle, and Yacht Rd. (This is where the Marina Green Pathway ends and the Crissy Field Pathway begins.) Bicycle and pedestrian safety has historically been a major concern at this complex freeway on and off ramp. Improvements are especially important here as the Bay Trail runs through the intersection. Meeting details: Wed., Aug. 25, from 6:30-8:30pm at Golden Gate Club, 135 Fisher Loop in the Presidio. More information at <http://www.doyledrive.org>

Gearing Up For 2 Biggest Bike Races In SF: Volunteers Needed

In only a few weeks, San Francisco will have two weekends in a row of great bike racing! Want to be a part of the excitement? We're just starting to recruit teams of volunteers to staff SFBC booths, free valet bike parking, a kids' bicycle safety learning area and more... mark your calendars and sign up now. Read on for details...

On Labor Day (Monday, September 6th), the "Giro di San Francisco" is celebrating their 30th year of criterion championships with men's & women's races starting at Levi Strauss Plaza. This year the Giro is adding a new kids festival with a "mini city" bike course designed to teach bike safety, courtesy of the SFBC, McGuire Real Estate & the City of San Francisco. For more information about the Giro, visit http://www.cyclecouriers.org/events/giro_sf.html To help with the Giro, contact lyonsann@yahoo.com.

No Volunteer Night Tonight

It's vacation time for the SFBC Volunteer Night. But, we'll be here next week and needing lots of helps, as always. To all of our dedicated Volunteer Night volunteers, thank you and have a nice week off.

Valet Bike Parkers Galore Needed

Summer is in full swing and that means the SFBC's valet bike parking program is more popular than ever! That, of course, means that we need volunteer help more than ever. Here are a few of the events we're still looking for help with:

* Golden Gate Renaissance Faire: Saturday, August 28, 10am-6pm in Speedway Meadows in Golden Gate Park. See more at www.sffaire.com

* T-Mobile Race: Sunday, September 12, all day long, along the racecourse in downtown and North Beach.

To volunteer to help park bikes, please contact Kay@sfbike.org

You're reading the SFBC Weekly Biker Bulletin

Get this sent directly to your Inbox by [joining the SFBC](#).

Add your voice to thousands demanding a city-wide network of bike lanes, traffic calmed streets, better access to transit and secure bike parking. Together we can make San Francisco the most bicycle friendly city in the country!

[TOP](#) ↗



Five Corners

DESIGN CHARRETTE
For the Intersection of
Marina Boulevard, Mason Street,
Lyon Street, Doyle Drive and Yacht Road

Help us design improvements for
the five corners intersection.

2004 Meeting dates:

Session 1: Wednesday, July 28, 6-9pm

Session 2: Wednesday, August 25, 6:30-8:30pm

Session 3: Wednesday, September 29, 6:30-8:30pm

Location: Golden Gate Club, 135 Fisher Loop,
In the Presidio



San Francisco County
Transportation Authority

100 Van Ness Avenue
25th Floor
San Francisco, CA 94102

TEL (415) 522-4800

PRESORTED
FIRST-CLASS MAIL
US POSTAGE PAID
SAN FRANCISCO, CA
PERMIT NO. 11751



Five Corners

DESIGN CHARRETTE
For the Intersection of
Marina Boulevard, Mason Street,
Lyon Street, Doyle Drive and Yacht Road

Help us design improvements for
the five corners intersection.

2004 Meeting dates:

Session 1: Wednesday, July 28, 6-9pm

Session 2: Wednesday, August 25, 6:30-8:30pm

Session 3: Wednesday, September 29, 6:30-8:30pm

Location: Golden Gate Club, 135 Fisher Loop,
In the Presidio



San Francisco County
Transportation Authority

100 Van Ness Avenue
25th Floor
San Francisco, CA 94102

TEL (415) 522-4800

PRESORTED
FIRST-CLASS MAIL
US POSTAGE PAID
SAN FRANCISCO, CA
PERMIT NO. 11751

WORKSHOP REMINDER!

Help us design improvements for the five corners intersection.

Design Workshop Session 1

for the Intersection of Marina Boulevard,
Mason Street, Lyon Street, Doyle Drive
and Yacht Road

Wednesday, July 28, 6-9pm

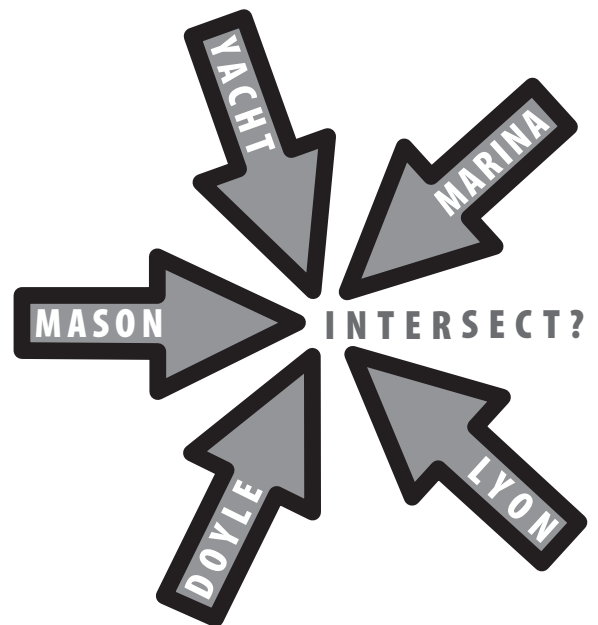
Golden Gate Club,
135 Fisher Loop, Presidio

Light refreshments will be served.

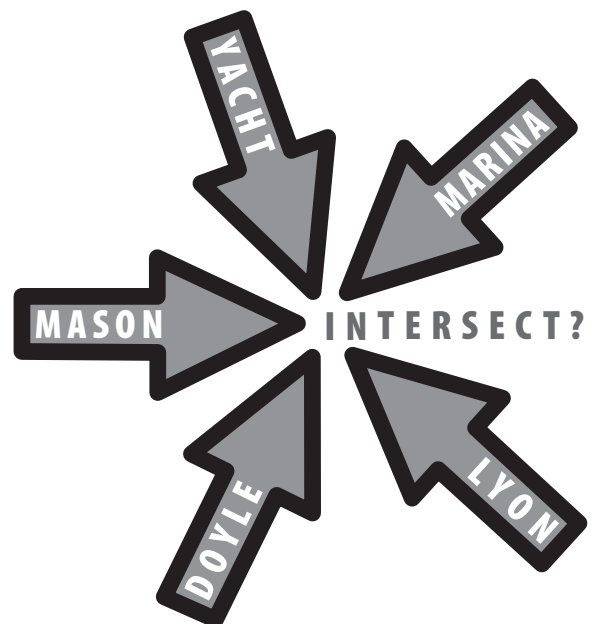
If you would like to participate, **RSVP** to
415-227-1100 ext 27 by **Monday, July 26, 2004.**

For details please visit
www.doyledrive.org

WHERE DO
OUR IDEAS...



WHERE DO
OUR IDEAS...



WORKSHOP REMINDER!

Help us design improvements for the five corners intersection.

Design Workshop Session 1

for the Intersection of Marina Boulevard,
Mason Street, Lyon Street, Doyle Drive
and Yacht Road

Wednesday, July 28, 6-9pm

Golden Gate Club,
135 Fisher Loop, Presidio

Light refreshments will be served.

If you would like to participate, **RSVP** to
415-227-1100 ext 27 by **Monday, July 26, 2004.**

For details please visit
www.doyledrive.org

September 2004 - Article for the Presidio Community Newsletter

Design Charrette Gets Community Input for Improving Intersection

The San Francisco County Transportation Authority is hosting a series of design workshops in response to questions and comments from the local community regarding the five-way intersection at Marina Boulevard, Mason Street, Lyon Street, Doyle Drive and Yacht Road.

At the first workshop on July 28, participants provided their observations of problems at the intersection; including conflicts between pedestrians, bikes and cars, vehicle speed, insufficient signage, etc. The group also listed and discussed specific objectives for the designers to consider when coming up with conceptual ideas to improve the intersection.

The designers worked with this input and came to workshop 2 on August 29 with nine preliminary design options ranging from a visual face lift to several ways of redesigning the intersection to reduce the number of streets entering it from five to four. Participants were asked to comment on the options and this input is now being used to refine the options and screen out any unworkable ideas.

On September 29, the group will gather again at the Golden Gate Club in the Presidio to review the refined design options and decide which should be submitted as recommendations to the San Francisco Department of Parking and Traffic.

For more information or to RSVP to charrette workshop 3, please contact Stefanie Pruegel at 415-227-1100, ext. 27 or s.pruegel@pamsf.com.